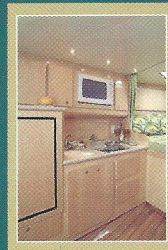
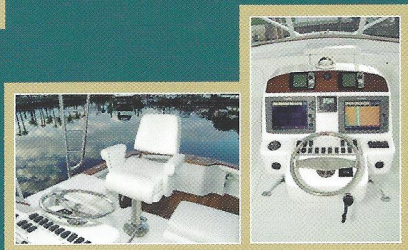
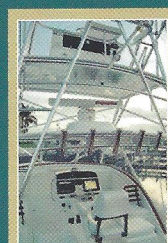
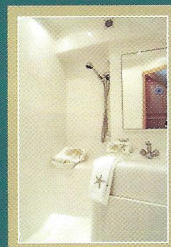
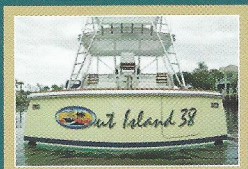


38 EXPRESS
FISHERMAN



1

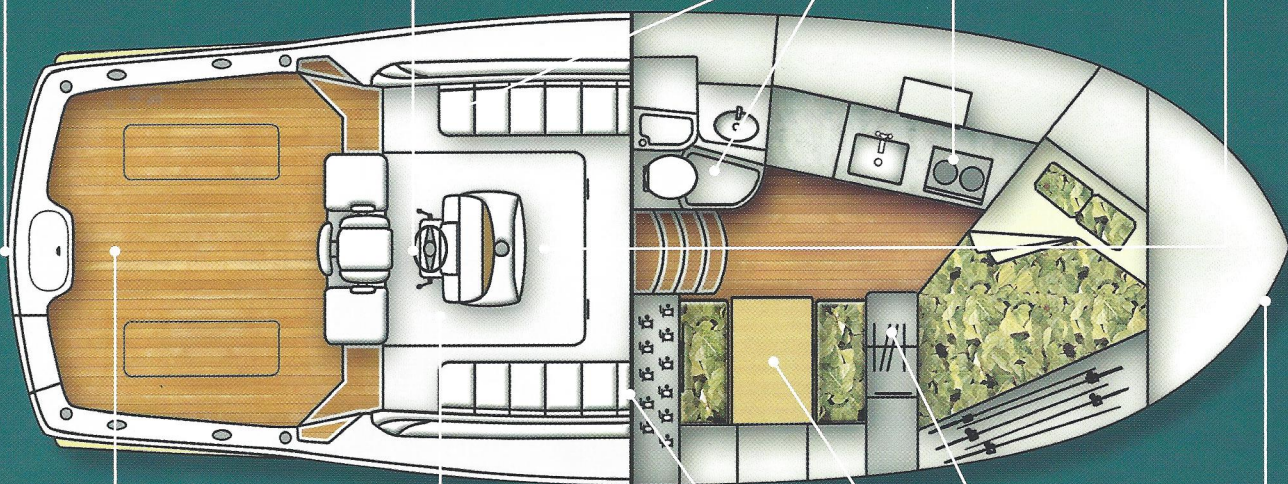
3

4

2

5

6



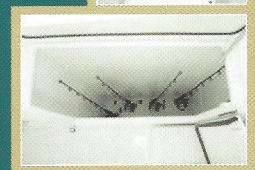
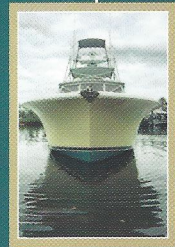
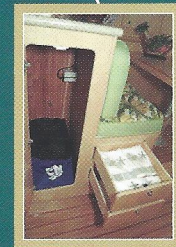
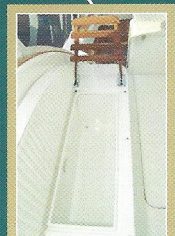
12

11

10

8

7

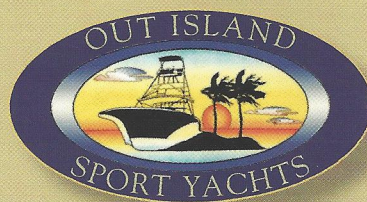


9



1 A rounded transom with classic tumblehome. 2 Center control station with hydraulic steering. Palm Beach style controls and ample room for electronics. 3 Optional, dual direction teak ladder backs 4 Spacious head and shower. 5 Well-equipped galley with dual voltage refrigerator-freezer, microwave, two burner recessed cook top and ample storage. 6 Optional tuna tower shown. 7 Pronounced Carolina flare. 8 Cedar lined hanging locker and plenty of drawers. 9 Upholstered dinette easily converts to bunk with electric pedestal. Flat panel, LCD HDTV/monitor is standard. 10 Port and starboard lounge seats with removable storage boxes. A concealed vertical locking rod locker complete with wash down is located forward of the starboard seat. 11 Dual access engine room with hydraulic lifting hatch. 12 Approximately 100 sq. ft. cockpit with bait-prep center, sink, icebox and tackle storage. Removable fish boxes with macerators. Walk-through transom door and transom bait well.

Your local dealer:

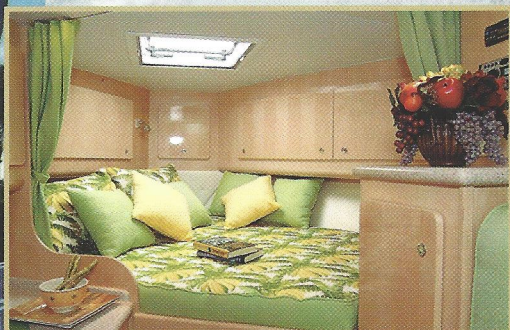


Out Island Sport Yachts, Inc.

Physical address:
523 South Leipzig Ave., Cologne, NJ 08213
Mailing address:
PO Box 351, Egg Harbor City, NJ 08215
Phone: (609) 804-8884 - Fax: (609) 804-1888
Web site: www.outislandsportyachts.com
E-Mail: OutIslandYachts@aol.com

Although all statements, descriptions and pictorial representations in this catalog are believed to be correct at the time of publication, accuracy cannot be guaranteed. Out Island Sport Yachts' policy is one of continued improvement, therefore equipment, colors, materials and other specifications, model availability and prices are subject to change without notice or obligation. Some illustrations in this catalog may show optional features.

Turnkey, www.turnkeybrochures.com.
Photos: J. Horncastle. Printed in Italy.

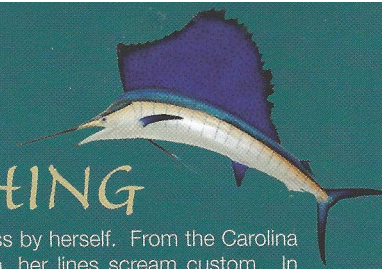


The bottom line here at Out Island is that custom looks and quality are available at production boat prices. And if you like what you have seen and read you're going to love how we ride. Before you buy another boat, contact us for a sea trial and see and feel for yourself. No other boat in our class, custom or production, delivers more. Your Out Island dealer and factory representatives look forward to helping you build your dream boat.

SPECIFICATIONS

Length	37'10"
Beam	14'2"
Draft	3'4"
Displacement	22,000 lbs
Fuel capacity	503 gallons
Fresh water capacity	112 gallons
Holding tank capacity	25 gallons
Bow entry at waterline	30° (half breadth)
Transom deadrise	17°
Cockpit area	100 square feet



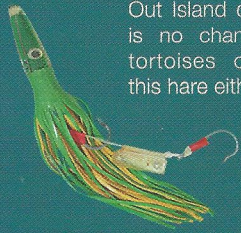


A FLARE FOR FISHING

The Out Island 38' Express Fisherman is simply in a class by herself. From the Carolina flare to the classic tumble home and rounded transom, her lines scream custom. In an age where most boats appear "cookie cutter" similar, this beauty is guaranteed to turn heads. A privately held company founded and managed by seasoned industry veterans, Out Island has raised the bar for semi-custom manufacturers. That design and construction decisions are made by avid boaters and fishermen instead of MBAs and accountants is crystal clear as soon as you step aboard. In addition to providing excellent visibility, the well thought-out center command station places every piece of electronics, control and switch at your fingertips. Clean, functional and extremely well-equipped,

the cockpit and helm decks are just the beginning of this classic boat's appeal. You will find abundant storage, including a concealed, locking and self-bailing rod locker complete with wash-down. Below lies a surprisingly spacious engine room with all equipment easily accessed for inspection and service. Inside the cabin, every door, drawer and cabinet is handcrafted at our facility by skilled craftsmen who average nearly 35 years experience each perfecting their skills.

Once fired up however, this beauty becomes a beast. As you effortlessly ease the throttles forward, you immediately realize this is no ordinary ride. Acceleration is impressive to say the least. You are up on plane in no time; leaving those less fortunate behind in your wake. Thanks to Out Island's solid construction and unique hull design, seas that would keep lesser boats at a snail's pace or at the dock, need not intimidate you. After all, what good is speed if you can't use it? With over 500 gallons of fuel and the efficiency Out Island delivers, there is no chance of those tortoises outdistancing this hare either.



Functional and elegant, the Out Island 38' Express Fisherman includes as standard all of the creature comforts, and more, that one would expect to find in a yacht of this class. Interior cabinetry is available in your choice of teak or maple, and hand finished by our team of dedicated artisans. A wide variety of fabrics, wall coverings and countertops are available to choose from to complement your choice of interior woodwork. Out Island also offers a rainbow of hull colors to choose from, to further individualize your boat.